



DEPARTMENT OF PUBLIC SERVICE
5330 Seaman Road
Oregon, Ohio 43616
(419) 698-7047
FAX (419) 691-0241

October 4, 2024

ADDENDUM No. 2
STREET DEPARTMENT GARAGE FACILITY - 2024

City of Oregon
Department of Public Service

BIDS TO BE OPENED: *Thursday, October 17, 2024 at 11:00 A.M.*

Plan holders of the City of Oregon's Street Department Garage Facility – 2024 are hereby notified of the following amendments to the Contract Documents. The following additions, alterations, deletions and/or clarifications shall be part of the Base Bid as much as if they were originally included in the Contract Documents. This Addendum No. 2 is hereby made a part of the Contract Documents.

TO ALL BIDDERS: This addendum supplements and amends the original drawings and project manual and shall be taken into account in preparing proposals and shall become a part of the contract document. This addendum must be received for on the proposal form.

NOTE: Addenda are emailed only to official plan holders who obtained plans and specifications from the Newfax Corporation, Inc., who is responsible for distribution of said plans and specifications. Each Prime Contractor is responsible for notifying subcontractors of any addenda issued.

Per the Notice to Bidders: All bids must be made on the proposal forms, which with the contract documents, including Specifications and Bid Forms must be obtained from [Newfax Corporation, Inc.](#), 333 West Woodruff Avenue, Toledo, OH 43604, P (419) 241-5157, M-F 8:30 am to 4:30 pm. Contact [Newfax Corporation](#) for cost of documents. Deposits are non-refundable.

NOTICE TO BIDDERS – Revised Bid Opening Date

The Bid Opening has been moved back to **11:00 am on Thursday, October 17, 2024.**

Delete and Replace the text for paragraph 1 of the **Notice to Bidders** with the following revised bid opening time:

Sealed proposals marked for “**Street Department Garage Facility - 2024**” will be received by the City of Oregon, Ohio, at the Office of the Director of Public Service at the Oregon Municipal Building, 5330 Seaman Road, Oregon, Ohio 43616-2608, **until 11:00 am, local time, on Thursday, October 17, 2024**, and then opened and read aloud for furnishing the Oregon Street Department with the following work:

CONTRACT CHANGES

1) Specification 01 21 00 ALLOWANCES

- Replace original section 01 21 00 ALLOWANCES with attached.

2) Specification 22 40 00 PLUMBING FIXTURES AND SPECIALTIES

- T & S Brass is an approved equal for plumbing fixtures or hardware.

ADDENDUM No. 2
STREET DEPARTMENT GARAGE FACILITY - 2024

ANSWERS TO SUBMITTED QUESTIONS

- 1) **Bidder Question:** *On sheet A1.2detail J1.1 show painted bollards 8'4" and on sheet S2.0 it shows galvanized 6'6" with bollard covers. Please advise which is correct*

Architect/Engineer Response: Utilize detail on drawing S2.0 which includes 6'-6" with bollard covers in lieu of 8'-4" painted bollards as shown on drawing A1.2.

- 2) **Bidder Question:** *Fire Alarm – The specification states DMP. The prints list Notifier as the FACP. Which one is preferred?*

Architect/Engineer Response: System shall be based on small capacity addressable fire alarm system, provide Notifier #NFW-50X or approved equal.

- 3) **Bidder Question:** *The City has an existing ProWatch access control system for all properties. I assume this building should be the same for the customer to manage.*

Architect/Engineer Response: Access control is not in scope within this project and will be addressed by the owner within the future as needed. See revised drawing E2.1.

- 4) **Bidder Question:** *Have the plans and specs been approved by the building permit department? Has the City of Oregon secured the permit.*

Architect/Engineer Response: A partial plan approval has been granted and awaiting all deferred submittals from the selected contractor in order to gain a final approval.

- 5) **Bidder Question:** *Can we quote Corbin Russwin for locks (with Best cylinders), and closers?*

Architect/Engineer Response: Corbin Russwin for locks (with Best cylinders), and closers are an approved manufacturer as long as they abide by all specifications and project requirements

ATTACHMENTS:

- Revised Specification 01 21 00 ALLOWANCES and Appendix Attachments
- Revised Drawing E2.1

***** END OF ADDENDUM NO. 2 *****

1. PART I – GENERAL

1.1 RELATED DOCUMENTS

- A. Drawings and General Provisions of Contract, including General and Special Conditions and other Division 1 specification Sections, apply to Work of this Section.

1.2 SUMMARY

- A. Work with owner to purchase and have delivered to the site the following:
 - 1) Item #2 - Air Compressor
 - 2) Item #72 - 2-Post Lift
 - 3) Item #74 - 4-Post Lift
- B. See Appendix for additional information
- C. Designate in Construction Schedule delivery dates for these products.
- D. Designate in Contract Cost Breakdown the installation cost (to be included in base bid) of these items.
- E. The installation cost of these items shall be included in the Base Bid Price.

1.3 ALLOWANCES

- A. Provide Work under allowance as directed by owner in accordance with the Contract Documents.
- B. The following additional dollar amounts are included on the bid form and are to be added to the Base Bid Price for inclusion in Total Project Contract Sum:
 - 1) Item #2 - Air Compressor
 - a) Mi-T-M M Series 120-Gallon ADS-23110-120HM
 - b) Allowance: \$9,500.00
 - 2) Item #72 - 2-Post Lift
 - a) BendPak Two-Post Lift XPR-18CL
 - b) Allowance: \$18,500.00
 - 3) Item #74 - 4-Post Lift
 - a) BendPak Four-Post Lifts HDS-40X
 - b) Allowance: \$40,000.00

C. Amount of Allowance includes:

- 1) Net cost of product as invoiced and paid by contractor
- 2) Delivery to the site from vendor as invoiced and paid by contractor
- 3) Applicable taxes (if any) as invoiced and paid by contractor

1.4 DELIVERY

A. Contractor Responsibility:

- 1) Arrange for delivery and unloading
 - a) Cost of unloading and handling the delivered material at the site by the contractor shall be included in the Base Bid Price
- 2) Promptly inspect product for damage or defects
- 3) Submit claims for transportation damage

1.5 INSTALLATION

- A. Install items per manufactures requirements.
- B. Cost of installation of each item shall be included in the Base Bid Price.

1.6 ADJUSTMENT OF CASH ALLOWANCES

- A. Unused amounts of monies included under allowances shall be credited to the Owner by deduct Change Order prior to approval of Final Application for Payment.
- B. The contractor shall notify the owner in writing as soon as they have knowledge that an allowance may be exceeded.

2. PART II – PRODUCTS (NOT APPLICABLE)

3. PART III – EXECUTION (NOT APPLICABLE)

◆ END OF SECTION ◆

ALLOWANCE #1

Item #2 (per A1.1)- Air Compressor

Mi-T-M M Series 120-Gallon ADS-23110-120HM



An
Employee
Owned
Company

M Series 80 & 120-Gallon Air Compressors

Two Stage — Electric — Simplex



ADS-23110-120HM

The M Series air compressors are available in many motor configurations and offer maximum air power day-in and day-out. Choose from either a vertical or horizontal tank for your specific needs.

COMPRESSOR PUMP

- Cast iron compressor pump
- Splash lubricated
- Stainless-steel braided discharge hose
- Large cartridge intake filter
- Oil level sight indicator

MOTOR

- Industrial low RPM motor
- Magnetic start for thermal overload protection

FRAME

- Powder coated ASME receiver tank
- $\frac{3}{16}$ -inch base plate to reduce vibration
- Powder coated two-piece belt guard

COMPONENTS

- ASME safety valves
- Tank pressure gauge
- Hour meter
- Large fly wheel
- Intake filter/silencer
- Tank shut-off valve

LIMITED WARRANTY

- 1 year motor

CERTIFICATION

- ASME Boiler and Pressure Vessel Code – U



M Series 80 & 120-Gallon

Air Compressors – Two Stage – Electric – Simplex

HORIZONTAL MODELS

MODEL NUMBER	CFM @ PSI	HORSEPOWER/MOTOR	PUMP RPM	TANK SIZE	DIMENSIONS (LxWxH)	BOLT DOWN (LxW)	SHIP WT.	NET WT.
ACS-23105-80HM	18.0 @ 175	5.0 HP, 230V, 1Ø, 23.0A	860	80-gallon	52x26.5x53in.	20.75x23.5in.	690 lb.	586 lb.
ACS-20305-80HM	18.0 @ 175	5.0 HP, 200V, 3Ø, 16.1A	860	80-gallon	52x26.5x53in.	20.75x23.5in.	660 lb.	556 lb.
ACS-23305-80HM	18.0 @ 175	5.0 HP, 230V, 3Ø, 13.8A	860	80-gallon	52x26.5x53in.	20.75x23.5in.	646 lb.	542 lb.
ACS-46305-80HM	18.0 @ 175	5.0 HP, 460V, 3Ø, 6.9A	860	80-gallon	52x26.5x53in.	20.75x23.5in.	646 lb.	542 lb.
ACS-23175-80HM	23.5 @ 175	7.5 HP, 230V, 1Ø, 31.0A	1250	80-gallon	52x26.5x53in.	20.75x23.5in.	708 lb.	604 lb.
ACS-20375-80HM	23.5 @ 175	7.5 HP, 200V, 3Ø, 23.0A	1250	80-gallon	52x26.5x53in.	20.75x23.5in.	679 lb.	575 lb.
ACS-23375-80HM	23.5 @ 175	7.5 HP, 230V, 3Ø, 20.0A	1250	80-gallon	52x26.5x53in.	20.75x23.5in.	668 lb.	564 lb.
ACS-46375-80HM	23.5 @ 175	7.5 HP, 460V, 3Ø, 10.0A	1250	80-gallon	52x26.5x53in.	20.75x23.5in.	668 lb.	564 lb.
ADS-23110-120HM	34.2 @ 175	10.0 HP, 230V, 1Ø, 39.0A	990	120-gallon	74x26.5x58in.	34.5x23.5in.	1016 lb.	866 lb.
ADS-20310-120HM	34.2 @ 175	10.0 HP, 200V, 3Ø, 30.8A	990	120-gallon	74x26.5x58in.	34.5x23.5in.	996 lb.	846 lb.
ADS-23310-120HM	34.2 @ 175	10.0 HP, 230V, 3Ø, 26.8A	990	120-gallon	74x26.5x58in.	34.5x23.5in.	986 lb.	836 lb.
ADS-46310-120HM	34.2 @ 175	10.0 HP, 460V, 3Ø, 13.4A	990	120-gallon	74x26.5x58in.	34.5x23.5in.	986 lb.	836 lb.
AES-20315-120HM	46.5 @ 175	15.0 HP, 200V, 3Ø, 44.0A	990	120-gallon	74x26.5x58in.	34.5x23.5in.	1208 lb.	1058 lb.
AES-23315-120HM	46.5 @ 175	15.0 HP, 230V, 3Ø, 38.0A	990	120-gallon	74x26.5x58in.	34.5x23.5in.	1193 lb.	1043 lb.
AES-46315-120HM	46.5 @ 175	15.0 HP, 460V, 3Ø, 19.0A	990	120-gallon	74x26.5x58in.	34.5x23.5in.	1193 lb.	1043 lb.

VERTICAL MODELS

MODEL NUMBER	CFM @ PSI	HORSEPOWER/MOTOR	PUMP RPM	TANK SIZE	DIMENSIONS (LxWxH)	BOLT DOWN (LxW)	SHIP WT.	NET WT.
ACS-23105-80VM	18.0 @ 175	5.0 HP, 230V, 1Ø, 23.0A	860	80-gallon	33x25x73in.	15.63x15.63in.	661 lb.	589 lb.
ACS-20305-80VM	18.0 @ 175	5.0 HP, 200V, 3Ø, 16.1A	860	80-gallon	33x25x73in.	15.63x15.63in.	660 lb.	588 lb.
ACS-23305-80VM	18.0 @ 175	5.0 HP, 230V, 3Ø, 13.8A	860	80-gallon	33x25x73in.	15.63x15.63in.	660 lb.	588 lb.
ACS-46305-80VM	18.0 @ 175	5.0 HP, 460V, 3Ø, 6.9A	860	80-gallon	33x25x73in.	15.63x15.63in.	660 lb.	588 lb.
ACS-23175-80VM	23.5 @ 175	7.5 HP, 230V, 1Ø, 31.0A	1250	80-gallon	33x25x73in.	15.63x15.63in.	706 lb.	634 lb.
ACS-20375-80VM	23.5 @ 175	7.5 HP, 200V, 3Ø, 23.0A	1250	80-gallon	33x25x73in.	15.63x15.63in.	691 lb.	619 lb.
ACS-23375-80VM	23.5 @ 175	7.5 HP, 230V, 3Ø, 20.0A	1250	80-gallon	33x25x73in.	15.63x15.63in.	690 lb.	618 lb.
ACS-46375-80VM	23.5 @ 175	7.5 HP, 460V, 3Ø, 10.0A	1250	80-gallon	33x25x73in.	15.63x15.63in.	690 lb.	618 lb.

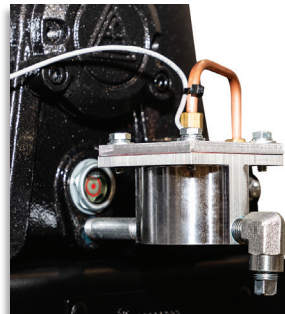
ACCESSORIES:

PART NUMBER	DESCRIPTION	FITS MODELS
3-0312	Replacement pump	ACS models
3-0313	Replacement pump	ADS models
3-0314	Replacement pump	AES models

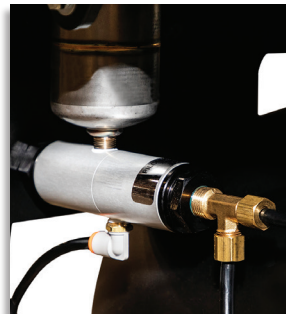
THESE FEATURES ARE WHAT SET THE M SERIES AIR COMPRESSORS APART.



Air-cooled after cooler removes up to 65% of moisture and drops temperature within 10°F of ambient



Low oil sensor does not allow unit to start when oil levels fall below an adequate level



Tank drain automatically drains liquid from the air receiver



Vibration isolator pads protect the tank from stress

WARNING: Cancer and Reproductive Harm - www.P65Warnings.ca.gov.

ALLOWANCE #2

Item #72 (per A1.1) - 2-Post Lift

BendPak Two-Post Lift XPR-18CL

XPR-18CL



Two-Post Lifts

SKU# 5175409

18,000-lb. Capacity, Clearfloor, Standard Arms

Questions? Contact BendPak's Sales Team

sales@bendpak.com | 1-800-253-2363

Monday - Friday, 7AM to 4:30PM PST

The Beast with Two Posts

Shops that work on massive fleets and vehicles need a powerful car lift with a small footprint, so only BendPak's 18,000-lb. capacity XPR-18CL will get the job done safely and efficiently. It offers the most lifting capacity of any two-post lift we make, which means you get the best column, carriage and frame component construction we offer.

With an XPR-18CL [two-post car lift](#), you will service an incredibly diverse array of vehicles. High-capacity two-post lifts are commonly known as "all-service" lifts. Given their versatility, they're the most common lift type found in professional shops. And, because they're going to be in so many shops, it's important that the XPR-18CL can lift any vehicle that falls well under the max weight capacity.



Optional Extended Height

SKU# 5175411

XPR-18CL-192

192" Overall Height

Features

- 18,000-lb. lifting capacity
- Padded overhead safety shutoff bar
- Extended height top-beam provides greater clearance
- Single-point safety release
- Dual direct-drive hydraulic cylinders
- Dual-synchro equalization system for equal lifting
- Oversized 53" tall carriage for superior strength
- Electric / hydraulic power system
- Oversized A36 steel base plates
- Self-lubricating dura-glide UHMW polyethylene bearings
- Safety locks in each column spaced every 3"
- Automatic arm restraints
- Heavy-duty 1/2" aircraft-quality equalizer cables
- Oversized cable sheave diameter reduces cable fatigue
- Durable, rubber lift pads with stackable adapters
- Multi-piece adapter set includes four 6" stackable adapters, four 3" stackable adapters, four polyurethane contact pads and four frame cradle pads. Ideal for trucks and vans with running boards or auxiliary fuel tanks.
- Convenient storage is included for truck and van adapters
- Versatile drop-in contact pads with stackable adapters

Quality Assurance for Heavy-Duty Lifting

When you buy BendPak, you can expect a significant boost in performance and lift operation life expectancy because your lift is built to be the last one you ever purchase. No one surpasses us in quality and safety. That's why when you get one of our lifts, you get more than just a great product. You get peace of mind. That's the benefit of owning a BendPak.

Super-duty telescoping arms

The XPR-18CL two-post lift is durable enough to lift a massive amount of weight. However much space between the garage floor and your vehicle's lift points, our smart, telescoping design and no-scratch pads make every lift safe and easy.

Optional column extension

BendPak can increase your overhead clearance to maximize the number vehicle types you can service in this weight class.

High-speed hydraulics

Free-flow, high-pressure 3/8" hydraulic lines, a high-flow pump and integrated AC power-unit increase ascent and descent speeds for enhanced productivity.

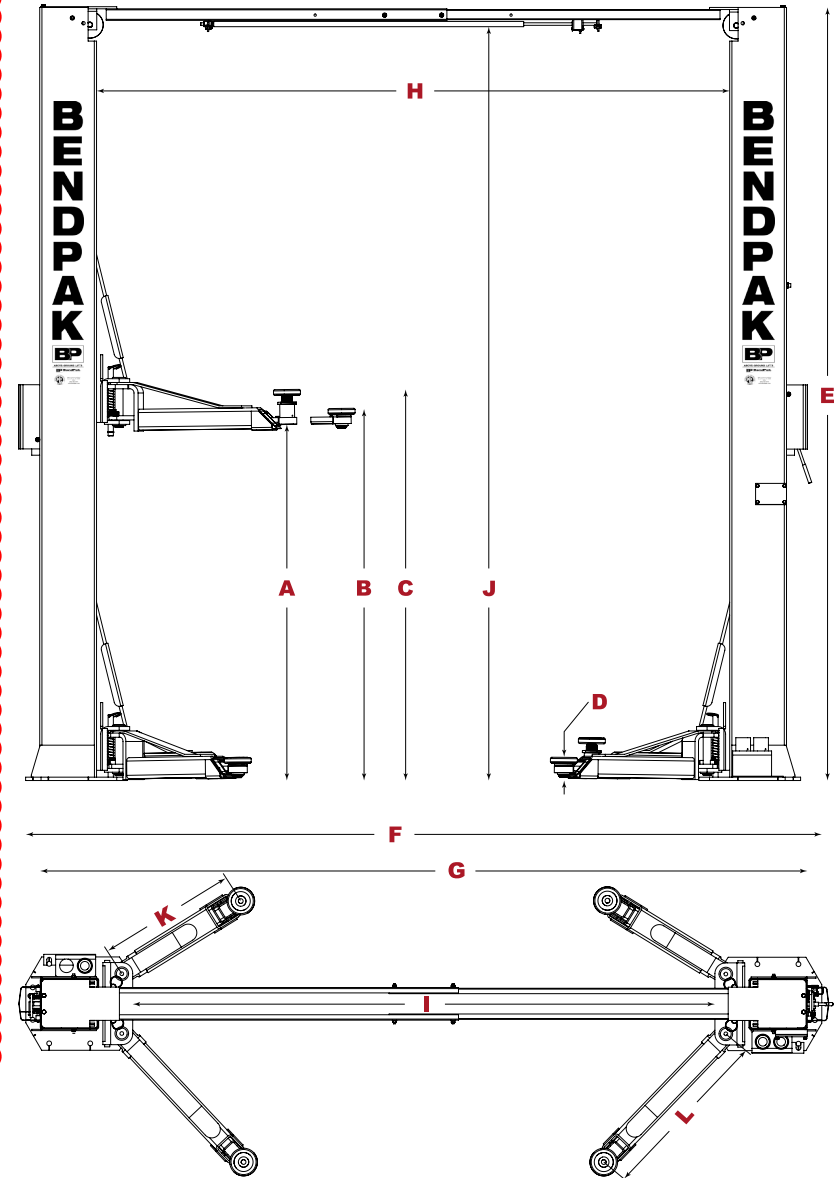
Extended Height

The safe and rugged XPR-18C-192 two-post lift features extended height columns for added overhead clearance, as well as an adjustable top beam to accommodate wide or narrow installation setups.

*Optional bolt-on height extension available.

Specifications

Model	XPR-12CL	XPR-15CL	XPR-18CL
SKU#	5175405	5175408	5175409
Lifting Capacity	12,000 lbs. (5,443 kg)	15,000 lbs. (6,804 kg)	18,000 lbs. (8,165 kg)
A - Rise	69" (1,753 mm)	69" (1,753 mm)	69" (1,753 mm)
B - Rise + Pad Only	74" (1,880 mm)	74" (1,880 mm)	74" (1,880 mm)
C - Max. Lifting Height	80" (2,032 mm)	80" (2,032 mm)	80" (2,032 mm)
D - Min. Height + Pad	5" (127 mm)	5" (127 mm)	5" (127 mm)
E - Height Overall (*)	170" (4,318 mm)	170" (4,318 mm)	170" (4,318 mm)
F - Width Overall	155" (3,937 mm)	155" (3,937 mm)	155" (3,937 mm)
G - Outside Columns	144" (3,658 mm)	144" (3,658 mm)	144" (3,658 mm)
H - Inside Columns	120" (3,048 mm)	120" (3,048 mm)	120" (3,048 mm)
I - Drive-Thru Clearance	106" (2,692 mm)	106" (2,692 mm)	106" (2,692 mm)
J - Floor to Top Switch (*)	165" (4,191 mm)	165" (4,191 mm)	165" (4,191 mm)
K - Front Arm Reach (MAX)	32" (813 mm)	39" (991 mm)	39" (991 mm)
K - Front Arm Reach (MIN)	60" (1,524 mm)	60" (1,524 mm)	60" (1,524 mm)
L - Rear Arm Reach (MAX)	32" (813 mm)	39" (991 mm)	39" (991 mm)
L - Rear Arm Reach (MIN)	60" (1,524 mm)	60" (1,524 mm)	60" (1,524 mm)
Screw Pad Adjustment	Not Compatible	Not Compatible	Not Compatible
Max. Load per Arm	3,000 lbs. (1,361 kg)	3,750 lbs. (1,701 kg)	4,500 lbs. (2,041 kg)
Time to Full Rise	90 seconds	90 seconds	90 seconds
Noise	45 dB	45 dB	45 dB
Motor	220 VAC / 60 Hz / 1 Ph	220 VAC / 60 Hz / 1 Ph	220 VAC / 60 Hz / 1 Ph



*Optional bolt-on top extension for columns raises the overall height and overhead safety bar an additional 24". Must be ordered from BendPak at time of order.

Not all BendPak lift models meet the standards as prescribed by ANSI/ALI ALCTV-2017 or ANSI/UL 201. Consult www.autolift.org for a complete list or contact BendPak via contact@bendpak.com.

ALLOWANCE #3

Item #74 (per A1.1) - 4-Post Lift

BendPak Four-Post Lifts HDS-40X

HDS-40X



Four-Post Lifts

SKU# 5175178

40,000-Lb. Capacity, Heavy-Duty Truck Lift / Extended

Questions? Contact BendPak's Sales Team

sales@bendpak.com | 1-800-253-2363

Monday - Friday, 7AM to 4:30PM PST

The Only Heavy-Duty Truck Lift You'll Ever Need

40,000 lbs. take a lot of muscle to lift, and many vehicles of this caliber are longer than our standard-length series of four-post lifts can accommodate. If you want to be prepared for the longest and heaviest, you need the biggest and baddest. At a whopping 310", the HDS-40X is the heaviest-duty extended-length [four-post lift](#) we make. Slap a bus on it and get to work, no sweat.



Choose Standard Length

SKU#	Model	Description
5175176	HDS-40	Standard Length

Features

- 40,000-lb. lifting capacity
- Standard length runways available
- Includes 48" extended steel approach ramps
- Supersized 12" diameter cable sheaves
- Stainless steel lifting cables
- Grease nipples
- Single hydraulic under-runway cylinder
- Integrated flow restrictor
- Durable powder coat
- Spring-loaded safety locks
- Second lock system on constant guard
- Fully enclosed lifting cables
- Multiple adjustable height locking positions
- Maintenance-free electric hydraulic power system
- Conveniently positioned operator controls
- 12" x 12" base plates
- Runways feature a durable matte finish
- Optional rolling jacks

Note: An air supply (minimum 30 psi / 3 CFM) is required for the safety-lock mechanisms to disengage. It is solely the responsibility of the end-user to provide, install and maintain the air supply.

Not all BendPak lift models meet the standards as prescribed by ANSI/ALI ALCTV-2017 or ANSI/UL 201. Consult www.autolift.org for a complete list or contact BendPak via contact@bendpak.com.

Extended Runways

We extend the runways on our heavy-duty truck lifts to keep your cargo safe. Steep ramps sometimes cause drivers to accidentally hit the pedal too hard and overshoot their target. A gradual climb maximizes loading and unloading convenience, as well as safety.

Dual-hub cable sheaves

Simply put, bigger sheaves and sheave axles make for a sturdier, safer and more powerful car lift. We build our four-post lift sheaves 12" in diameter, accompanied by 4" diameter sheave axles. You can expect low-maintenance and high-functioning parts for many years to come.

Heavy-duty aircraft cable

Our 1/2" diameter, 6 x 25 stainless-steel lifting cables have a 14,000-lb. breaking strength per cable. The four cables alone, without the hydraulic cylinder, offer more than enough power to safely lift your 35,000-lb. truck. We over-engineer our components and proudly wear our ALI Certification on the columns of our four-post lifts for all the world to see.

Built-in lubrication

Grease nipples are useful devices because they make the HDS-40X a self-lubricating, auto-maintaining powerhouse. This massive car lift reduces your costs by giving you quality parts, like self-lubricating sheaves, which require only periodic attention.

Large base plates

Truck lift base plates are made a little wider than the bases of our lighter-duty four-post lift models: 12" x 12" plate dimensions are sturdy and can be easily bolted into suitable concrete flooring for years.

HDS-40X



Four-Post Lifts

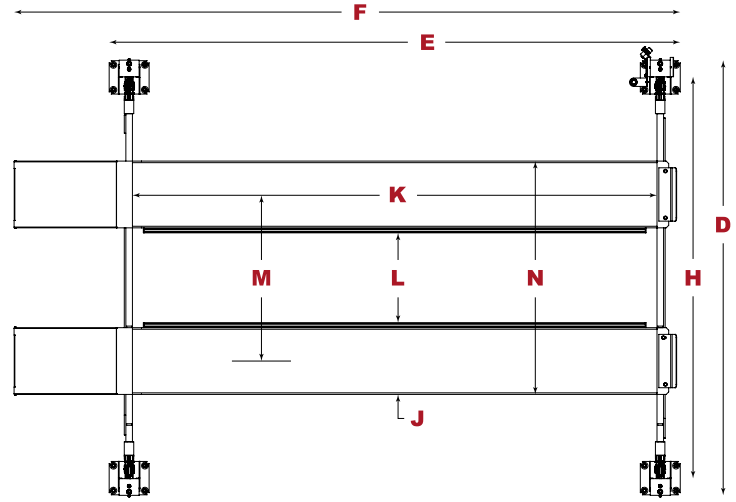
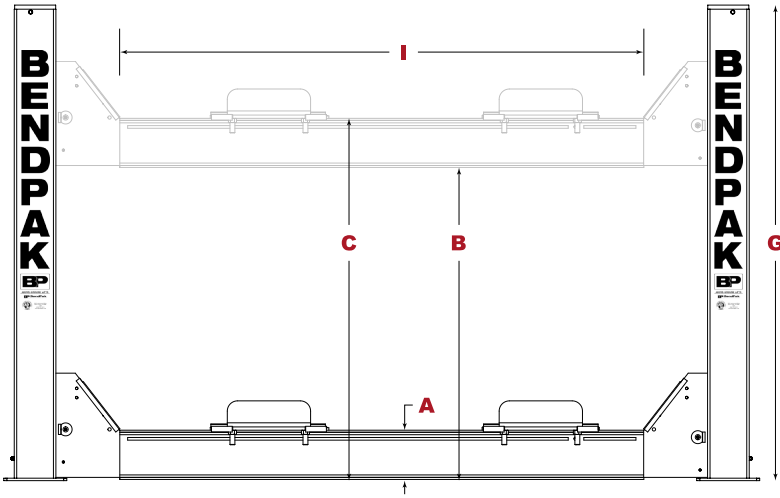
SKU# 5175178

40,000-Lb. Capacity, Heavy-Duty Truck Lift / Extended

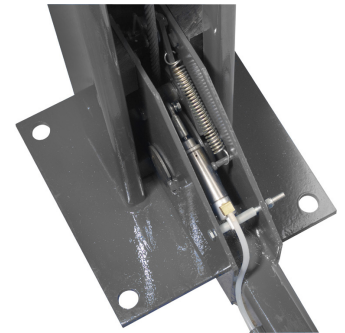
Questions? Contact BendPak's Sales Team

sales@bendpak.com | 1-800-253-2363

Monday - Friday, 7AM to 4:30PM PST

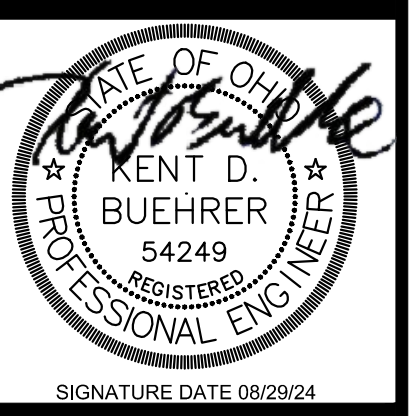


Model	HDS-40	HDS-40X
SKU#	5175176	5175178
Lifting Capacity	40,000 lbs. (18,144 kg)	40,000 lbs. (18,144 kg)
A - Min. Runway Height	8.5" (216 mm)	8.5" (216 mm)
B - Max. Rise	60" (1,524 mm)	60" (1,524 mm)
C - Max. Lifting Height	68.5" (1,740 mm)	68.5" (1,740 mm)
D - Overall Width	153.5" (3,899 mm)	153.5" (3,899 mm)
E - Outside Length	257" (6,528 mm)	317" (8,052 mm)
F - Overall Length	313.75" (7,969 mm)	373.5" (9,487 mm)
G - Height of Columns	91.25" (2,318 mm)	93" (2,362 mm)
H - Width Between Columns	133.5" (3,391 mm)	134" (3,404 mm)
I - Drive-Thru Clearance	109" (2,769 mm)	109" (2,769 mm)
J - Runway Width	28" (711 mm)	28" (711 mm)
K - Length of Runways	244.5" (6,210 mm)	304.5" (7,734 mm)
L - Width Between Runways	41" (1,041 mm)	41" (1,041 mm)
M - Runway Centerline	69" (1,753 mm)	69" (1,753 mm)
N - Outside Edge of Runways	97" (2,464 mm)	97" (2,464 mm)
Min Wheelbase @ Rated Capacity	185" (4,699 mm)	230" (5,842 mm)
Min Wheelbase @ 75% Capacity	160" (4,064 mm)	195" (4,953 mm)
Min Wheelbase @ 50% Capacity	135" (3,429 mm)	165" (4,191 mm)
Min Wheelbase @ 25% Capacity	110" (2,794 mm)	130" (3,302 mm)
Locking Positions	9	9
Lock Spacing	every 6" (152 mm)	every 6" (152 mm)
Lifting Time	75 sec	75 sec
Motor	220 VAC / 60 Hz / 1 Ph	220 VAC / 60 Hz / 1 Ph



An air supply (minimum 30 psi / 3 CFM) is required for the safety-lock mechanisms to disengage. It is solely the responsibility of the end-user to provide, install and maintain the air supply.

Not all BendPak lift models meet the standards as prescribed by ANSI/ALI ALCTV-2017 or ANSI/UL 201. Consult www.autolift.org for a complete list or contact BendPak via contact@bendpak.com.

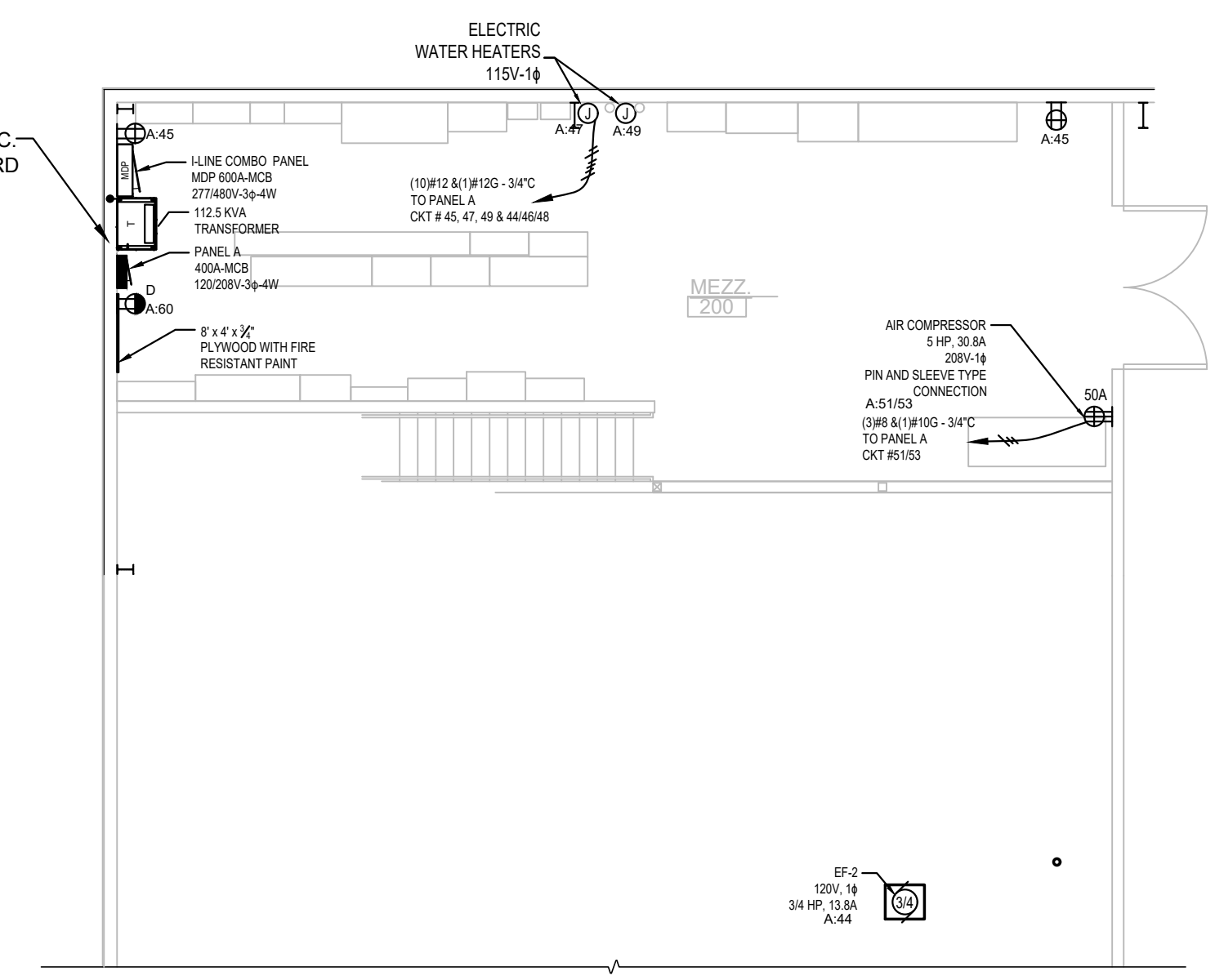


STREET DEPARTMENT GARAGE FACILITY
FOR
CITY OF OREGON
5330 SEAMAN ROAD
OHIO

BUEHRER GROUP
architecture & engineering, inc.
314 CONANT ST., WAUWATOE, OH 43087 | P: 419.893.9021 F: 419.893.9027 | BUEHRERGROUP.COM

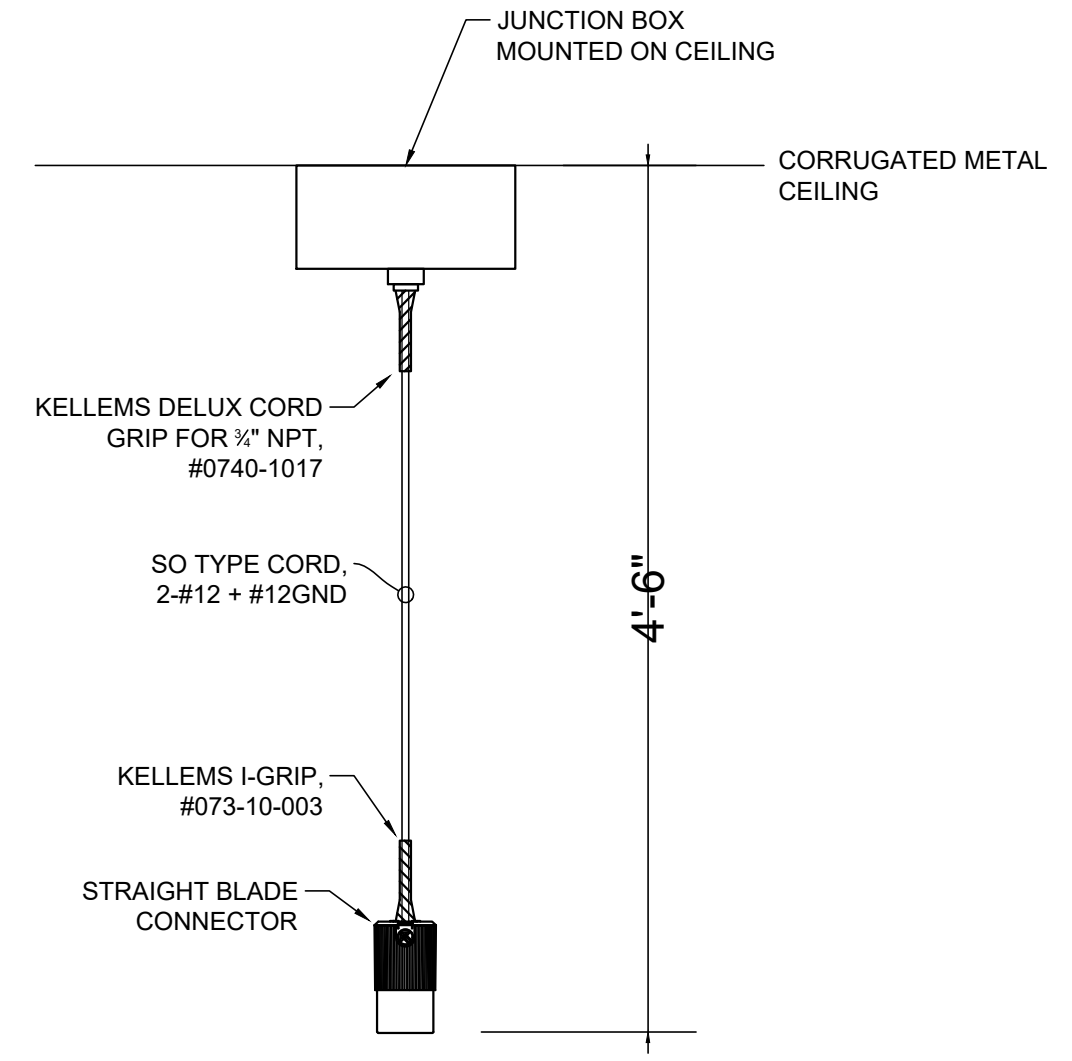
REVISION SCHEDULE	
1	ISSUE DATE: 11/25/20
2	JOB NUMBER: 200434
3	CONSTRUCTION DOCUMENTS

E2.1

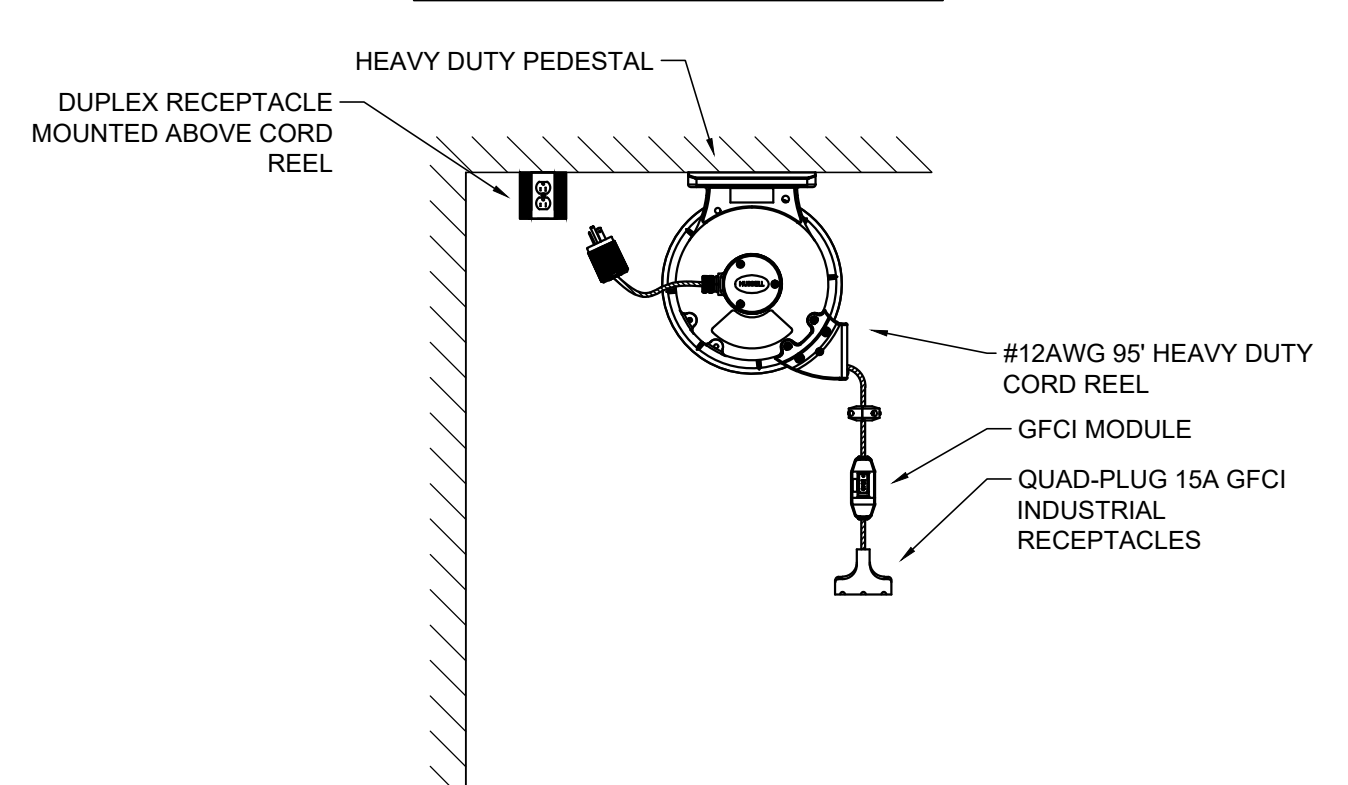


POWER & SYSTEMS PLAN
MEZZANINE & ATTIC
SCALE: 1/8"=1'-0"

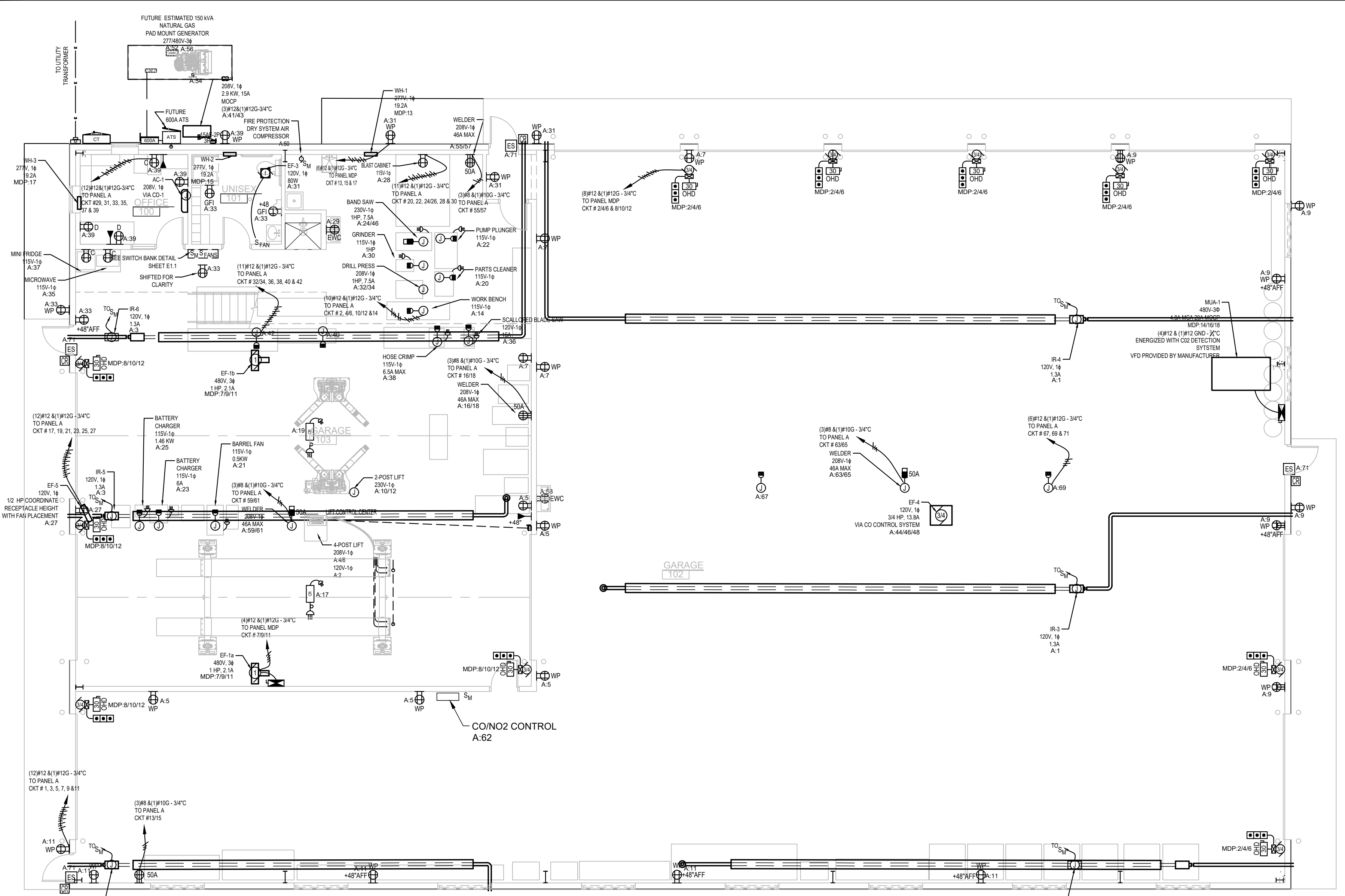
HANGING RECEPTACLE DETAIL



CORD REEL DETAIL



NOTES:
1. CORD REELS SHALL BE INSTALLED IN ACCORDANCE WITH 2017 NEC 400.10 & 400.12



POWER & SYSTEMS PLAN
FIRST FLOOR
SCALE: 1/8"=1'-0"

ELECTRICAL POWER NOTES

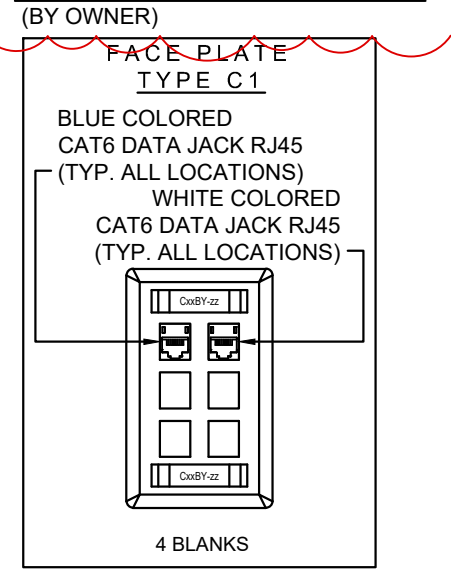
1. QUALITY ASSURANCE: ALL WORK SHALL BE IN ACCORDANCE WITH THE NFPA 70 - NATIONAL ELECTRICAL CODE 2023. ALL NEW AND UTILIZED MATERIALS SHALL BE UL - UNDERWRITER'S LABORATORY LISTED. OCCUPATIONAL HEALTH AND SAFETY ASSOCIATION SHALL COMPLY WITH ALL APPLICABLE OSHA STANDARDS.
2. ALL PANEL BOARDS IN THIS SCOPE OF WORK SHALL ALL HAVE LABELED TYPED DIRECTORIES PROVIDED, INDICATING ALL CIRCUITS, AND A COPY INSERTED INSIDE THE PANEL DOOR.
3. ALL LOCATIONS SHOWN ARE APPROXIMATE. CONTRACTOR TO COORDINATE RECEPTACLE & DATA JACK TERMINATION LOCATIONS WITH OWNER.
4. UNLESS NOTED OTHERWISE, ALL CIRCUIT HOMERUNS ON THIS SHEET SHALL BE #12AWG WITH DEDICATED #12AWG NEUTRAL AND SHARED #12AWG GROUND WIRE, IN 3/4" CONDUIT.
5. FUTURE GENERATOR TO BE SIZED AT A LATER DATE, BASED ON ACTUAL 12-MONTH ELECTRICAL USAGE.
 - 5.1. ALL CONDUITS FOR FEEDERS AND CONTROL CIRCUITS INCORPORATED IN CURRENT SCOPE OF WORK. REFER TO SHEET E3.1 FOR SIZING. PROVIDE WITH PULL STRINGS AND COVERS TO AVOID ANY MOISTURE GATHERING IN THE CONDUIT OVER THE COURSE OF A YEAR.
 - 5.1. COORDINATE EXACT LOCATION WITH ANY UNDERGROUND UTILITIES AND ALL REQUIRED WORKING SPACE CLEARANCES, PER NEC 2023.
6. REFER TO CIVIL DRAWINGS FOR EXACT LOCATIONS OF INCOMING POWER AND COMMUNICATIONS CONDUIT.

POWER LEGENDS

	VARIABLE SPEED FAN SWITCH - 15A - 120V WITH COVER PLATE. MH=4'-0".
	WATTSTOPPER HDFC-1A-x
	MANUAL MOTOR STARTER - 120V - 1 POLE WITH OVERLOAD AND PILOT LIGHT. MH = 5'-0". "K" - KEY OPERATED.
	SQUARE D CLASS 2510 TYPE CR101 G.E. SIEMENS SMF
	NEW DUPLEX CONV. OUTLET 20A - 125V 3 WIRE GROUND TYPE. MH = 16" OR "C" DENOTES 6" ABOVE COUNTER, UNLESS OTHERWISE NOTED. COLOR OF DEVICES TO BE DETERMINED BY OWNER. AVOID CONFLICTS WITH CASEWORK.
	HUBBELL 5362x P & S COOPER 5362x LEVITON 5362x
	DUPLEX GFI OUTLET - 20A - 125V - 3 WIRE GROUND FAULT INTERRUPTER TYPE - FLUSH MTD. MH = 16" OR "C" DENOTES 6" ABOVE COUNTER, UNLESS OTHERWISE NOTED.
	HUBBELL GF20xLU 2095x VGF20x 7899-SGX
	DUPLEX GFI WEATHER-RESISTANT OUTLET - 20A - 125V - 3 WIRE GROUND FAULT INTERRUPTER TYPE - FLUSH MTD. MH = 16" OR "C" DENOTES 6" ABOVE COUNTER, UNLESS OTHERWISE NOTED.
	COOPER WRVGF20x LEVITON W7899-x
	SAME AS DUPLEX OUTLET, BUT FOR ELECTRIC WATER COOLER. VERIFY SPECIAL MOUNTING HEIGHT WITH PLUMBING CONTRACTOR. OUTLET TO BE SERVED VIA GFCI BREAKER.
	SAME AS ABOVE WITH 2 OUTLETS IN ONE DOUBLE DUPLEX BACK BOX.
	RECEPTACLE 50A - 125/250V - 3 POLE - 4 WIRE GROUND TYPE. MH=16" UNLESS OTHERWISE NOTED. FIELD VERIFY PROPER NEMA CONFIGURATION.
	HUBBELL HBL9450A 3894
	DUPLEX SURGE SUPPRESSION OUTLET - 20A - 125V - 3 WIRE GROUND - FLUSH MTD. MH = 16" OR "C" DENOTES 6" ABOVE COUNTER, UNLESS OTHERWISE NOTED. COLOR OF DEVICES TO BE DETERMINED BY OWNER. "D" DENOTES DUAL DUPLEX.
	HUBBELL HBL5362xSA TR5362xSP COOPER 5362xS LEVITON 5360-x

- 45' WHITE INDUSTRIAL CORD REEL W/ QUICK ATTACH MOUNTING BRACKET W/ 20A RATED PORTABLE BLACK OUTLET BOX EQUIPPED WITH (2) 20A DUPLEX RECEPTACLES AND GFCI MODULE. EQUAL TO HUBBELL #HBL45123GF220M1.
- CEILING MOUNTED HANGING RECEPTACLE - VOLTAGE AS NOTED, SEE DETAIL.
- OVERHEAD GARAGE DOOR CONTROL BY G.C. WIRED BY E.C.
- NEW UNDERGROUND ELECTRICAL LINES
- NEW CONDUIT / CABLE TURNED UP, NEW CONDUIT / CABLE TURNED DOWN.
- INDICATES PHASE, NEUTRAL, AND GROUND CONDUCTORS IN CONDUIT.
- INDICATES (2) PHASE, NEUTRAL, AND GROUND CONDUCTORS IN CONDUIT.
- INDICATES (3) PHASE, NEUTRAL, AND GROUND CONDUCTORS IN CONDUIT.
- MOTOR BY OTHERS. FUNCTION, VOLTAGE AND SIZE AS NOTED.
- FRACTIONAL HORSEPOWER MOTOR BY M.C.
- BUILT-IN CONTROLLER SUPPLIED BY OTHERS UNLESS NOTED OTHERWISE. POWER WIRING BY ELECTRICAL CONTRACTOR.
- SAFETY SWITCH - SIZE AS NOTED ("3R" RAIN TIGHT, "NF" NON-FUSED, "4X" STAINLESS STEEL)
- SURFACE MOUNTED POWER PANEL - 120/208V-3φ-4W.
- MAIN DISTRIBUTION PANELBOARD - 277/480V-3φ-4W. SEE SPECS.
- DRY TYPE TRANSFORMER SIZE AS NOTED. SEE SPECS.
- CT CABINET, BY UTILITY COMPANY.
- ELECTRIC METER BY UTILITY COMPANY
- JUNCTION BOX
- AUTOMATIC TRANSFER SWITCH - 277/480V-3φ-4W. SEE SPECS.

FUTURE TERMINATIONS (BY OWNER)



COMMUNICATIONS LEGEND

COMBINATION VOICE/DATA JACK. MH=16" UNLESS NOTED OTHERWISE. 1-1/2" CONDUIT STUB INTO CEILING SPACE. SEE SCHEDULE BELOW. NO DESIGNATION DENOTES ROUGH-IN BOX WITH BLANK COVER AND 1-1/2" CONDUIT STUBBED INTO CEILING ABOVE

ACCESS CONTROL LEGEND

- PROVIDE 3/4" CONDUIT AND PULL STRING FROM POWER PACK ABOVE DOOR TO CARD READER AND ELECTRIC STRIKE BELOW. OWNER TO INSTALL DOOR ACCESS CONTROL SYSTEM IN THE FUTURE
- CARD READER
- NEW ELECTRIC STRIKE

GENERAL TECH NOTES:

1. ALL SYSTEMS DESIGNATED FOR TERMINATIONS ARE TO BE HARD-WIRED (FIRE ALARM), UNLESS OTHERWISE NOTED
- 1.1. FOR CLARITY, DRAWINGS ONLY SHOW FINAL LOCATIONS OF DEVICES WHERE CABLING IS TO BE TERMINATED. ELECTRICAL CONTRACTOR IS RESPONSIBLE FOR PROVIDING THE REQUIRED CABLING FROM DEVICE TO DEVICE. PROVIDE 4" FC FROM IN-GROUND SITE DATA PULL BOX TO PLYWOOD BACKBOARD IN MEZZANINE. REFER TO CIVIL DRAWING C6. COORDINATE EXACT ROUTE WITH ALL UTILITIES AND OWNER.
- 1.2. PROVIDE CONDUIT STUBS WITH PULL STRINGS FOR ALL DATA, SECURITY CAMERA, AND DOOR ACCESS BEHIND WALLS AND ABOVE ENCLOSED CEILINGS. COORDINATE EXACT LOCATIONS WITH ARCHITECT AND OWNER PRIOR TO RUGH-IN.
2. ELECTRICAL CONTRACTOR IS RESPONSIBLE FOR ALL REQUIRED CABLING, ROUGH-INS, BACK BOXES, CABLE SUPPORTS, COUPLERS, TERMINATIONS, & PROGRAMMING AS REQUIRED TO HAVE A COMPLETE AND OPERABLE INSTALLATION.
3. ELECTRICAL CONTRACTOR IS RESPONSIBLE FOR LABELING & PROVIDING SERVICE LOOPS AT EACH END.
4. ELECTRICAL CONTRACTOR IS RESPONSIBLE FOR VERIFYING ALL CABLE LENGTHS AS TO NOT EXCEED MANUFACTURER SPECIFICATIONS.
5. ELECTRICAL CONTRACTOR IS RESPONSIBLE FOR CHECKING ALL DRAWINGS FOR SYSTEM RISERS & DETAILS. SYSTEM RISERS & DETAILS SHOWN ON PLANS ARE GENERIC IN NATURE AND ELECTRICAL CONTRACTOR IS RESPONSIBLE TO VERIFY WITH MANUFACTURER FOR INSTALLATION INSTRUCTIONS AND RECOMMENDATIONS.
6. ELECTRICAL CONTRACTOR IS RESPONSIBLE FOR COORDINATING ALL SYSTEMS FOR COMPATIBILITY WITH ONE ANOTHER.